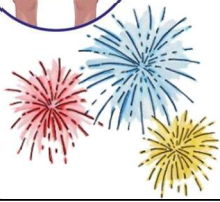




# St Mark's CE Primary School

'Loving to Learn, Learning to Love'



## Reception Newsletter

### Autumn 2



Welcome back! We hope you have all had a good holiday and the children have had a rest and are ready to start our next learning challenge. This half term our question will be "**Who are the characters inside our books?**" During this topic, the children will be learning more about stories that many of them will be familiar with and thinking about what the characters are doing and thinking. However, our first week back will focus on Bonfire night and the history behind why this is celebrated by many families.



#### Literacy

We hope your children have enjoyed learning a range of different stories last half term. Hopefully, they have come home reciting some of them.

This half term, we will be learning about traditional tales such as Goldilocks and Little Red Riding Hood and will be using our Talk 4 Writing strategies to help the children become familiar with them.



#### Maths

This half term we are going to be looking at finding 1 more and 1 less than numbers to 10, finding different ways to make all numbers to 5 and practising counting – making sure that we are saying a number name for each object as we count. We will also be revisiting 2D shapes and using and understanding positional language.

#### Reading / Phonics

The children in both classes have now been assessed for phonics and will be in groups with other children of a similar ability. This might mean that your child has different sounds to practice at home to help them make the progress they deserve.

Thank you to those parents who listen to their children read every night – those children are making fantastic progress. All children really need to read their school reading book / sounds every night to help them make progress.



The children in both classes have now settled well into school and are trying hard to be more independent at school.

You can help your child become more independent at home by encouraging them to feed themselves at mealtimes and by encouraging them to dress / undress with less help.

Now that the weather is getting colder, please make sure that your child has a warm winter coat in school every day.



#### P.E.

PE will be on a **MONDAY** this half term.

Please make sure that children are wearing the correct PE kit on a Monday and that all jewellery is removed. Children with earrings in will not be able to take part in PE sessions.